

A close-up photograph of several large, green, textured leaves, likely from a tropical plant, filling the left half of the image. The leaves are layered, with some in sharp focus and others slightly blurred in the background.

IDEA GROUP IGM SRL



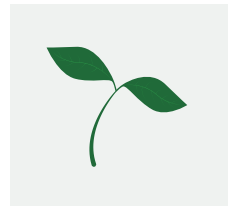
# Ecofriendly Ideas

Since 2005

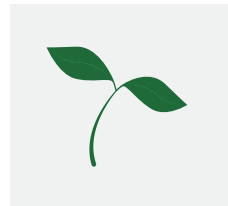


# Hi! We are Idea Group IGM!

Green soul society



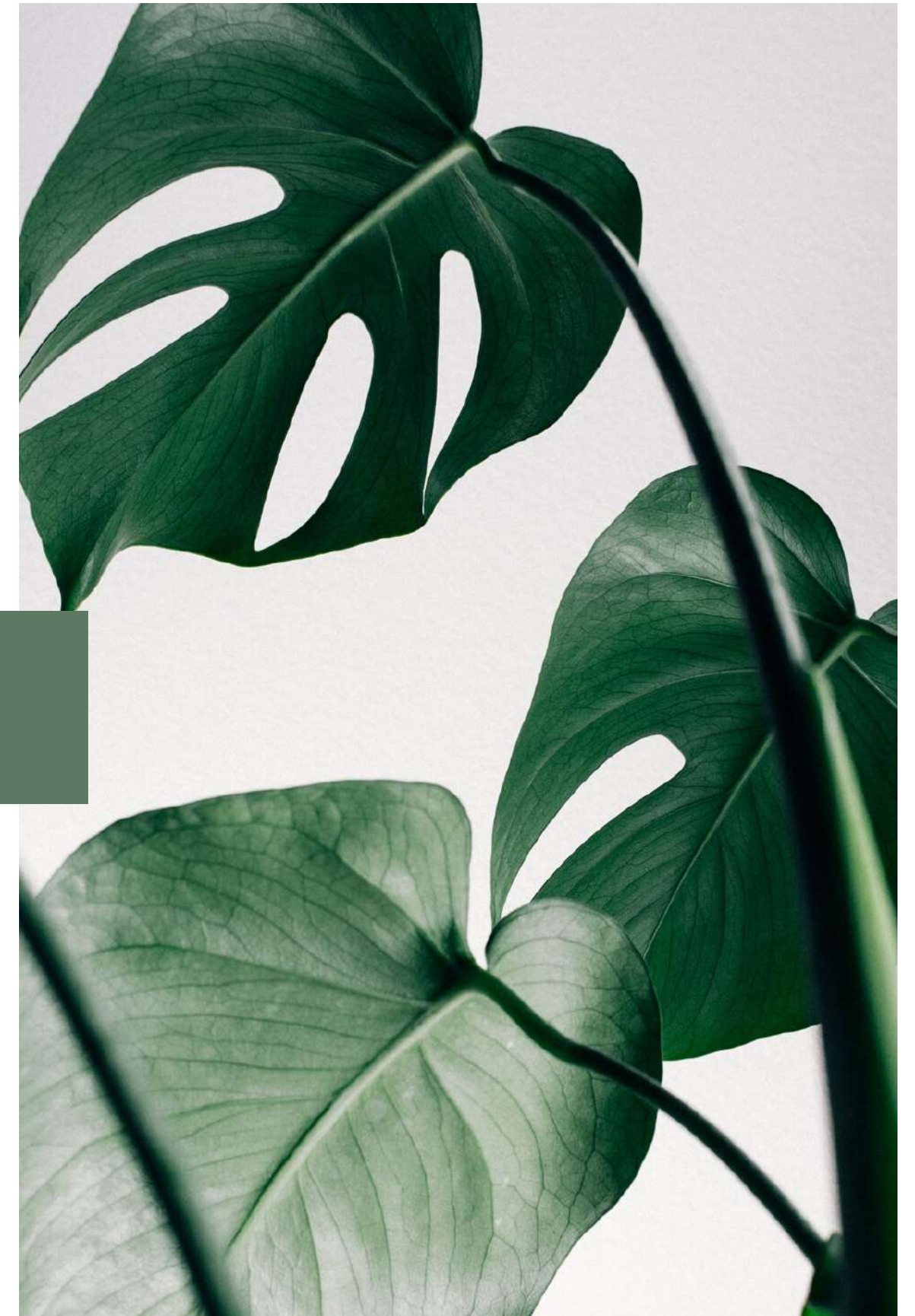
Environmentalism



Nature Lover



Plant Caring





WE ARE

an **Italian** marketing agency  
**focused** on production of:  
gadgets, gifts, toys and POS  
materials



WE HAVE

more than **15 years of experience**.  
**Passion** for solution, **imagination**  
and **creativity**



WE WANT

**trasforming** your ideas into product

**SPEAKING  
ABOUT US**





The 5 Rs

**Refuse,  
Reduce, Reuse,  
Recycle, Rot**

# So, what we do?

## R PET

Do you know **PET**? The **R makes the difference**: it comes from common plastic and we can create *backpack, bags, cover and so on!*

## GREEN PE

Registered logo. **Green Polyethylene** is a renewable alternative to polyethylene, a thermoplastic resin that is widely used for the packaging. We make beverages packing, home care box, beauty accessories.

**Comes from the sugar cane.**

## CORK

Cork is an impermeable buoyant material, highly recycling and widely usable: **we can make waterbottle, trays, coaster for bottle and even backpack!**

## COFFEE FIBER/LOOFAH

Drink **coffee** or use it in many other ways! What do you think if you scrub your face with coffee fiber? And if we tell you that we also have a natural scrubber? It's name is **Loofah!** Perfect for every kind skin.



And

## CORKY

Made in **100% recycled cellulose**. 100% Made in Italy.  
Best way to storage your pochette items!

## PLA/ASTRIK

PLA is polyactic acid also known as polylactide, belongs to the polyester family. Polylactic acid is a kind of raw material. The raw material is abundant and renewable, mainly corn, cassava and so on.

For ASTRIK: is made from renewable natural starches and bamboo. ASTRIK production emits 1/5 of greenhouse gases compared to normal plastic production.

## BIODEGRADABLE TEXTILE

Think about the fact: you can use a 100% material and don't let track on the planet!  
Pochette, bags, foldable backpack and so on!

## VEGETABLES TEXTILE

What is your favorite fruit? Do you ever think using a **vegetal fiber for making your favorite bags**? We can!





## RPET



# How can *bottles* become *something* else?



## From bottles to...

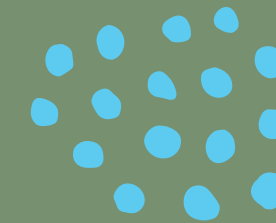
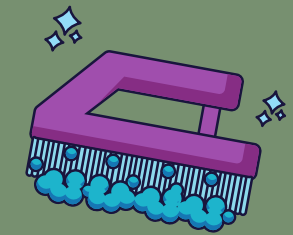
rPET is the term used for recycled PET plastic. PET is the plastic for common goods, such as water bottles, or makeup containers; rPET is 100% recycled plastic that comes from PET!



### Bottles

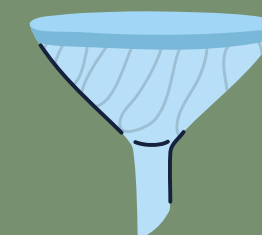
Bottles are thrown into the trash. They are cleaned up.

STEP  
01



STEP  
02

The Crumbing  
Bottles go into a huge machine that shreds them into pellets



### Melting

Now the pices of plastic are crushed and melted down

STEP  
03



STEP  
04

New life  
Now it's only time to give him a new shining lie, in your hands!





## GREEN PE

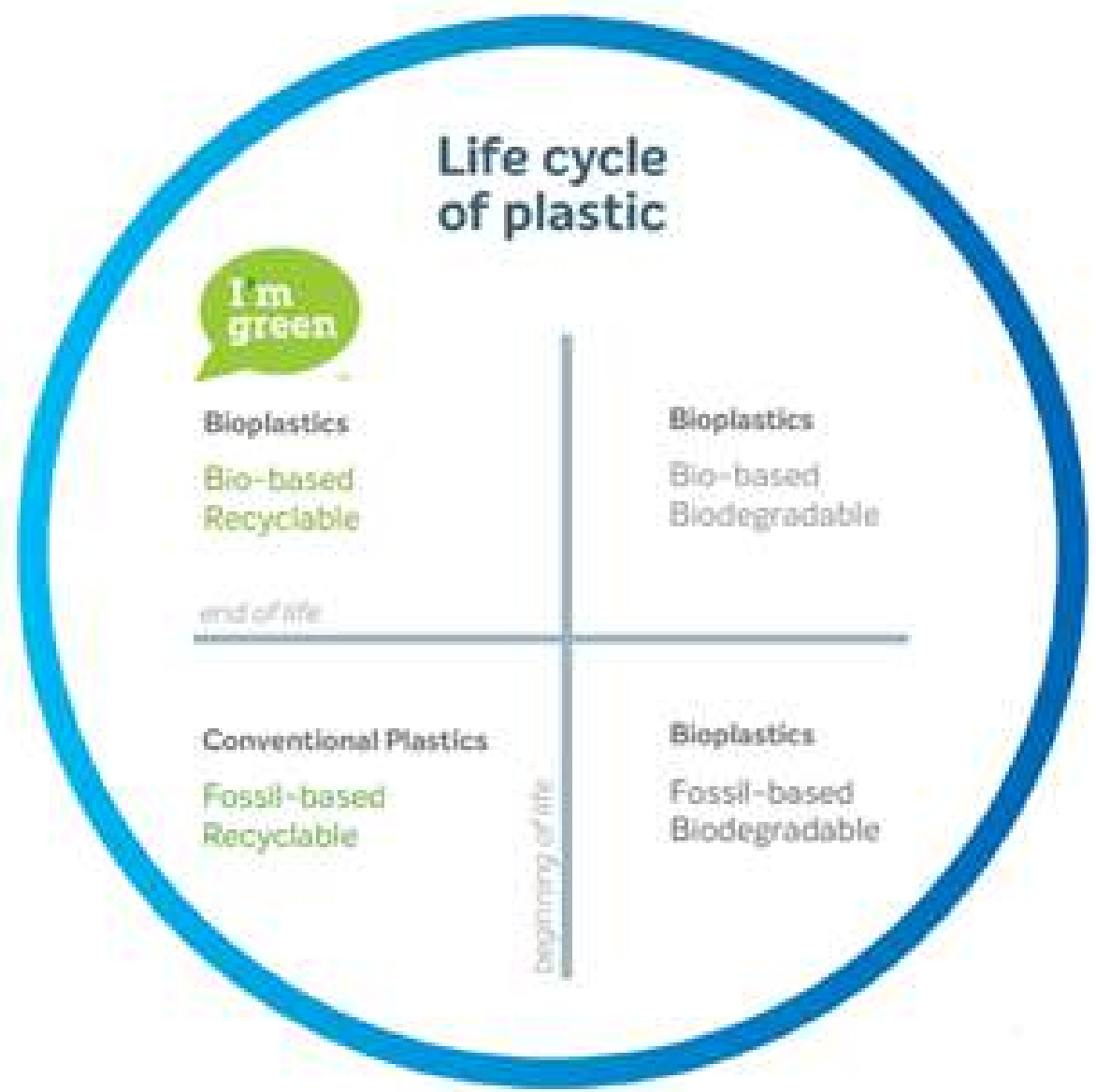
**I'm green™**  
**Polyethylene**  
Innovation and differentiation  
for your product







**I'm green™ Polyethylene**  
Innovation and differentiation  
for your product



-  Beverages
-  Retailing
-  Home care
-  Agriculture and industry
-  Cosmetics
-  Food
-  Hygiene and beauty





## CORK





## COFFEE FIBER





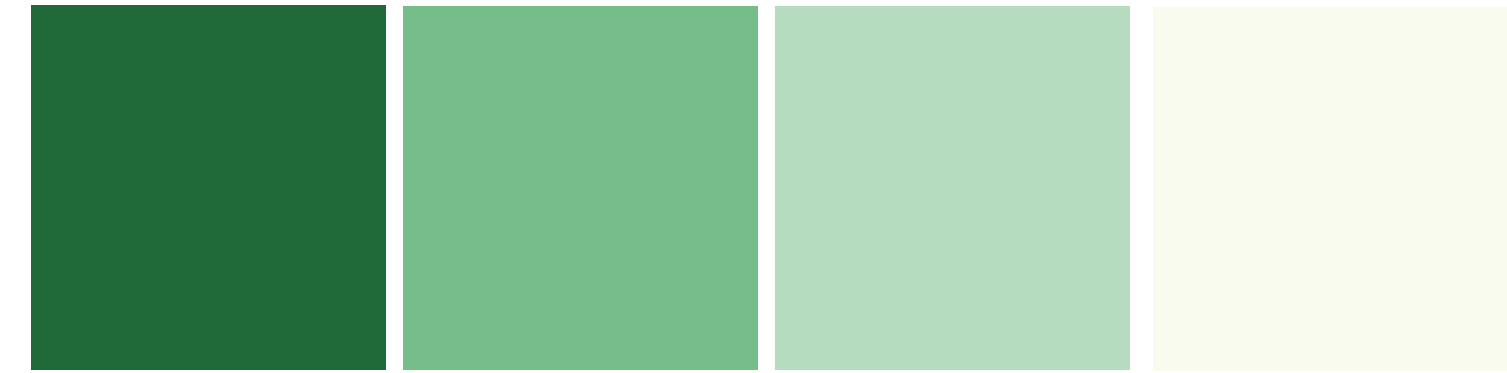
## LOOFAH







# LOOFAH NATURAL SCRUBBER from Asia



It is a climbing plant, similar to a courgette, belonging to the Cucurbitaceae family. Originally from Asia and, fond of the sun, it prefers warm climates and a good degree of humidity.

At the time of complete maturation, it dehydrates, losing most of its weight; what remains is exclusively the fibrous body, a real natural scrubber.

It is an **ecological** and **hypoallergenic** product, not being chemically bleached or treated. By adapting to **almost all skin types**, except the extremely delicate one, it **naturally exfoliates** by promoting **cell renewal, stimulating blood circulation** and leaving the epidermis **free to regenerate**.

*From the first use, softer and more luminous skin, free from imperfections and impurities.*





## CORKY





# Corky Kraft



- MADE OF PURE **CELLULOSE**
- CHARACTERIZED BY A RELIEF MATERIAL FINISH AND AN INCREDIBLE **RESISTANCE** TO WEIGHT AND WEAR
- SENSE OF THREE **DIMENSIONALITY**
- TOTALLY **RECYCLABLE**
- SEWN WITH **COTTON THREAD**



100% MADE IN ITALY





## PLA





The production process of PLA is as follows: First, the extraction of glucose from beet, sugarcane, wheat, corn and other natural crops. Lactic acid is derived from glucose fermentation. finally, the lactic acid is transformed into poly-lactic acid i.e. PLA through a chemical reaction.



## PLA Biodegradable Products

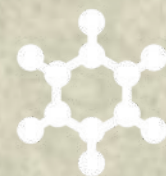
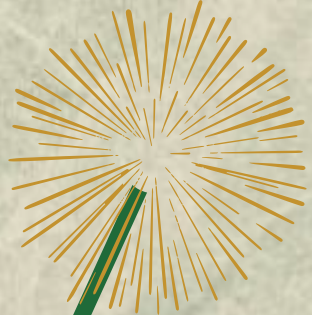




## ASTRIK







# ASTRIK

IDEA GROUP  
international gift manufacturing



MICROWAVE AND DISH WASHER SAFE

## S U S T A I N A B L E

Made from renewable natural starches and ground bamboo. **Astrik** emits 1/5 of the greenhouse gases of traditional plastics in manufacturing.

## D U R A B L E

Tough enough to withstand drops or falls.

**Made to be moisture resistant and heat tolerant.**

Designed with every day use in mind and resilient enough to last a lifetime.

## R E P U R P O S E D

Modifying Machines used for traditional plastics to make a responsible material. **Ensuring** the same machines will be used for decades to come.

## B I O D E G R A D A B L E

Lasting decades in the home but only a short time in the landfill. **Once the product is thrown away heat, moisture, and bacteria common in landfills begin to eat away at the product.**

Breaking down cleanly to leave no trace for generations to come.





## VEGETABLE TEXTILE







Small orders of Eco-friendly  
& Recycled items acceptable



Optional different colors of  
Eco-friendly & Recycled  
fabric in stock



High quality Eco-friendly  
& Recycled products

## PINEAPPLE FIBER

Pineapple leaf fiber, which belongs to hemp leaf fibers, is fiber extracted from pineapple leaves. Can be blended with natural fibers or synthetic fibers. Easy printing and dyeing, breathable, no-easy wrinkly, comfortable, eco-friendly.



## BANANA FIBER

Using banana stem as raw material, mainly composed of cellulose, hemicellulose and lignin. Good wet absorption, easy dyeing and can be blended spun with cellulose fibers as cotton, etc.



## TENCEL

TENCEL is a brand name for a fiber which is also called lyocell, manufactured by the Lenzing AG company. Tencel or lyocell is a sustainable fabric, regenerated from wood cellulose.



## BAMBOO FIBER

Cellulose fibers extracted from naturally growing bamboo. Breathable, instantaneously water absorbable, wearable, easy dyeing, natural anti-bacteria, anti-mite, anti-odor, anti-ultraviolet, eco-friendly.















## BIODEGRADABLE TEXTILE





 <p>● Loading more than 20 Kgs and 20 Liters, mini 10 Kgs</p>	 <p>● Durable: Reuse more than 30 times</p>	 <p>● Waterproof &amp; Leakproof</p>
 <p>● Machine Washable</p>	 <p>● Strong Welding Adhesive Ability</p>	 <p>● OEM/ ODM: Full Coverage Printing</p>
 <p>● Large Volume: Can Hold Up to 20 kgs</p>	 <p>● Lightweight</p>	 <p>● Easy to Carry Around: Folds in to Mini Pouch</p>

  
 enjoy writing with your pencil until it's too short

  
 plant in wet soil, seed side down & inclined to allow room to grow

  
 water regularly and enjoy your new plant







# IDEA GROUP IGM SRL INTERNATIONAL GIFT MANUFACTURING

VIA GIORGIO PULLÈ, 17/19  
35136 PADOVA ITALY  
TEL. +39 049 59 14153  
P.I. 02404300309

*INFO@IDEAGROUPIGM.COM*  
*IDEAGROUPIGM.COM*

# THANK YOU FOR WATCHING!



IDEA GROUP IGM SRL